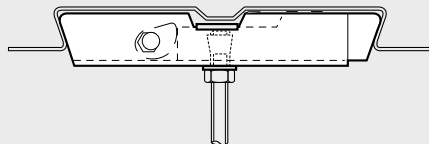


■ FIXATION LINDAPTER® BANDE PRE-GALVA TYPE SD2

Modèle
97341

PRE-GALVA ZN



lindapter®

Exemple d'utilisation,
voir www.emile-maurin.fr



LINDAPTER® SLIMDEK 2 TYPE SD2
MALLEABLE IRON ZINC PLATED

LINDAPTER® CUBIERTA DELGADA 2 TIPO
SD2 HIERRO MALEABLE ZINC PLATEADO

LINDAPTER® SLIMDEK 2 TIPO SD2 FERRO
MALLEABILE ELETTROZINCATO

Référence	Tige 4.6
973416	M6
973418	M8
9734110	M10