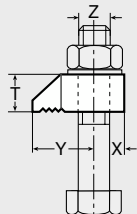


CRAPAUD LINDAPTER® BSNT

Modèle
95904

FONTE GALVANISE A CHAUD

lindapter®



RÉFÉRENCES MEMENTO TECHNIQUE

7.7 Galvanisation à chaud



LINDAPTER® FLAT TOP NO TAIL CLAMP
TYPE BSNT MALLEABLE IRON HOT DIP
GALVANISED

LINDAPTER® ABRAZADERA PLANA SIN
COLA TIPO BSNT HIERRO MALEABLE
GALVANIZADO POR INMERSION

LINDAPTER® RAMPONE A TESTA PIANA
SENZA TACCO TIPO BSNT FERRO
MALLEABILE ZINCATO HOT DIP (PER
IMMERSIONE A CALDO)

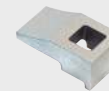
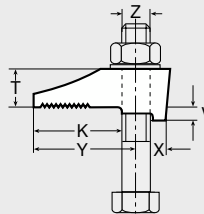
| Référence | Boulon Z | Y (mm) | X (mm) | T (mm) |
|-----------|----------|--------|--------|--------|
| 9590412 | M12 | 26 | 13 | 16 |
| 9590416 | M16 | 30 | 16 | 20 |
| 9590420 | M20 | 36 | 19 | 24 |
| 9590424 | M24 | 48 | 25 | 32 |

CRAPAUD LINDAPTER® BSLN

Modèle
95911

FONTE ZN

lindapter®



LINDAPTER® FLAT TOP LONG NOSE CLAMP
TYPE BSLN MALLEABLE IRON ZINC PLATED

LINDAPTER® ABRAZADERA PLANA LARGA
TIPO BSLN HIERRO MALEABLE ZINC
PLATEADO

LINDAPTER® RAMPONE A TESTA PIANA
CON NASO ALLUNGATO TIPO BSLN FERRO
MALLEABILE ELETTOZINCATO

| Référence | Boulon Z | Y (mm) | X (mm) | V (mm) | T (mm) |
|-----------|----------|--------|--------|--------|--------|
| 9591112 | M12 | 45,5 | 15,5 | 6 | 17 |
| 9591116 | M16 | 44 | 17 | 11 | 16 |