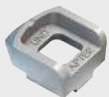
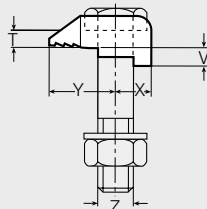


CRAPAUD LINDAPTER® TYPE A COURT

Modèle
95101

FONTA ZN

lindapter®



LINDAPTER® RECESSED CLAMP TYPE A SHORT MALLEABLE IRON ZINC PLATED

LINDAPTER® ABRAZADERA EMPOTRADA TIPO A CORTO HIERRO MALLEABLE ZINC PLATEADO

LINDAPTER® RAMPONE A TESTA CAVA TIPO A CON TACCO BASSO FERRO MALLEABILE ELETTROZINCATO



CALE DE REGLAGE LINDAPTER® TYPE CW ACIER - ZN
Modèle 97144
Page L 04



CALE DE REGLAGE LINDAPTER® TYPE P1 COURT FONTE ZN
Modèle 97161
Page L 04



CALE DE REGLAGE LINDAPTER® TYPE P2 COURT FONTE ZN
Modèle 97181
Page L 05

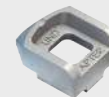
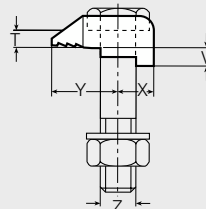
Référence	Boulon Z	Y (mm)	X (mm)	V (mm)	T (mm)
9510110	M10	20	11	4	5
9510112	M12	26	13	4,5	6
9510116	M16	30	16	5,5	8
9510120	M20	36	19	7	10
9510124	M24	48	25	9	12

CRAPAUD LINDAPTER® TYPE A MOYEN

Modèle
95111

FONTA ZN

lindapter®



LINDAPTER® RECESSED CLAMP TYPE A MEDIUM MALLEABLE IRON ZINC PLATED

LINDAPTER® ABRAZADERA EMPOTRADA TIPO A MEDIO HIERRO MALLEABLE ZINC PLATEADO

LINDAPTER® RAMPONE A TESTA CAVA TIPO A CON TACCO MEDIO FERRO MALLEABILE ELETTROZINCATO



CALE DE REGLAGE LINDAPTER® TYPE CW ACIER - ZN
Modèle 97144
Page L 04



CALE DE REGLAGE LINDAPTER® TYPE P1 COURT FONTE ZN
Modèle 97161
Page L 04



CALE DE REGLAGE LINDAPTER® TYPE P2 COURT FONTE ZN
Modèle 97181
Page L 05

Référence	Boulon Z	Y (mm)	X (mm)	V (mm)	T (mm)
951118	M8	16	8	4	4
9511110	M10	20	11	5	5
9511112	M12	26	13	6	6
9511116	M16	30	16	8	8
9511120	M20	36	19	10	10
9511124	M24	48	25	12	12