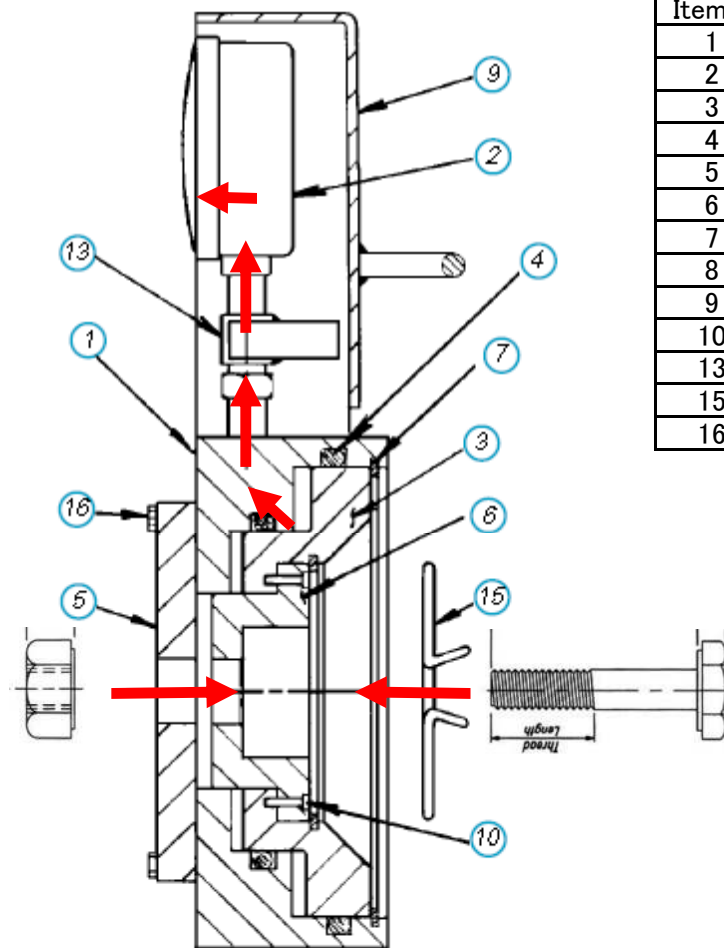


## How TMC-400 Bolt Tension Calibrator Works

1. Insert bolt/nut/washer assembly (fastener assembly) into the calibrator.
2. Tightening of fastener assembly inserted into the calibrator creates clamp force (pressure).
3. Piston transmits pressure received from clamped force through hydraulic fluid to a gage.
4. The gage gives a direct reading equivalent to fastener clamped force (tension) in kN.

\* Pressure (N/mm<sup>2</sup>) is proportional to the tension (N), kN = 1000N.



| Item # | Description                |
|--------|----------------------------|
| 1      | Body                       |
| 2      | Gage                       |
| 3      | Piston                     |
| 4      | Packing                    |
| 5      | Bolt Plate                 |
| 6      | Bolt Bushing               |
| 7      | Snap Ring                  |
| 8      | Mounting Screw (not shown) |
| 9      | Gage Guard                 |
| 10     | Bushing Dowel Pin          |
| 13     | Gage Saver                 |
| 15     | Bushing Retainer           |
| 16     | Plate Screw                |